

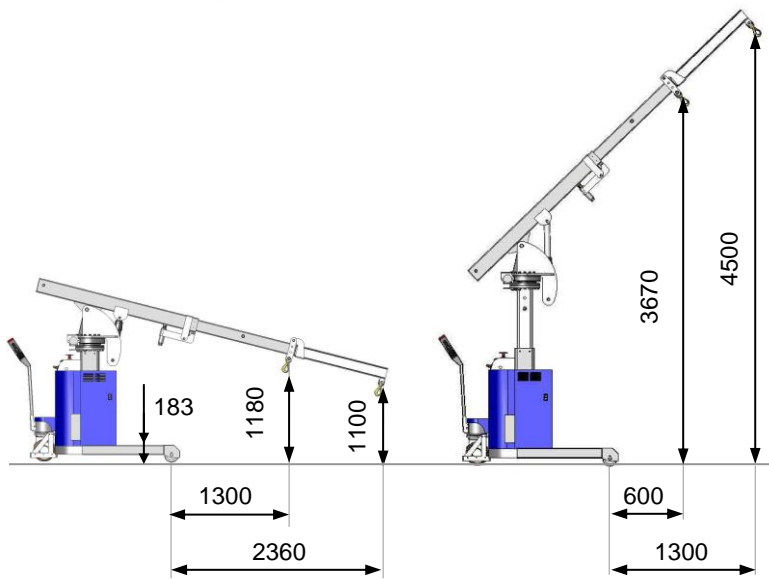
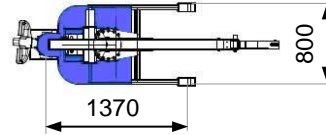
# Technical sheet I2MO Evolutive v2

Self-propelled mini-crane with accompanying operator

Updated August, 12<sup>th</sup>, 2020



Patented model



## Technical specifications



Maximal load .....	1250 kg
Unladen weight (Full option) .....	1000 kg
Traction batteries .....	24V – 180 Ah
Hydraulic power station engine .....	2,2 kW
Translation power engine (option) .....	0,7 kW

## Series equipments

- Proportional hydraulic distribution
- Hydraulic inclination of the jib by double acting cylinder
- Wired remote control with emergency stop and potentiometer
- Hour meter and battery charge indicator
- Polyurethane coating wheels
- Hydraulic & electric safety devices
- Anti-tilt system

## Options

- Electric traction with variable speed drive unit
- Hydraulic rotary mast 18°
- Hydraulic vertical mast stroke 600mm
- Hydraulic telescope
- Additional jib Ig=1m00
- Additional jib Ig=0m35
- Electric winchs (500 kg or 300 kg)



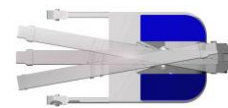
Hydraulic inclination of the boom



Hydraulic vertical mast stroke 600 mm



Hydraulic telescope



Mast rotation (18° without stabilizers)



Electric traction

# Technical sheet I2MO Evolutive v2

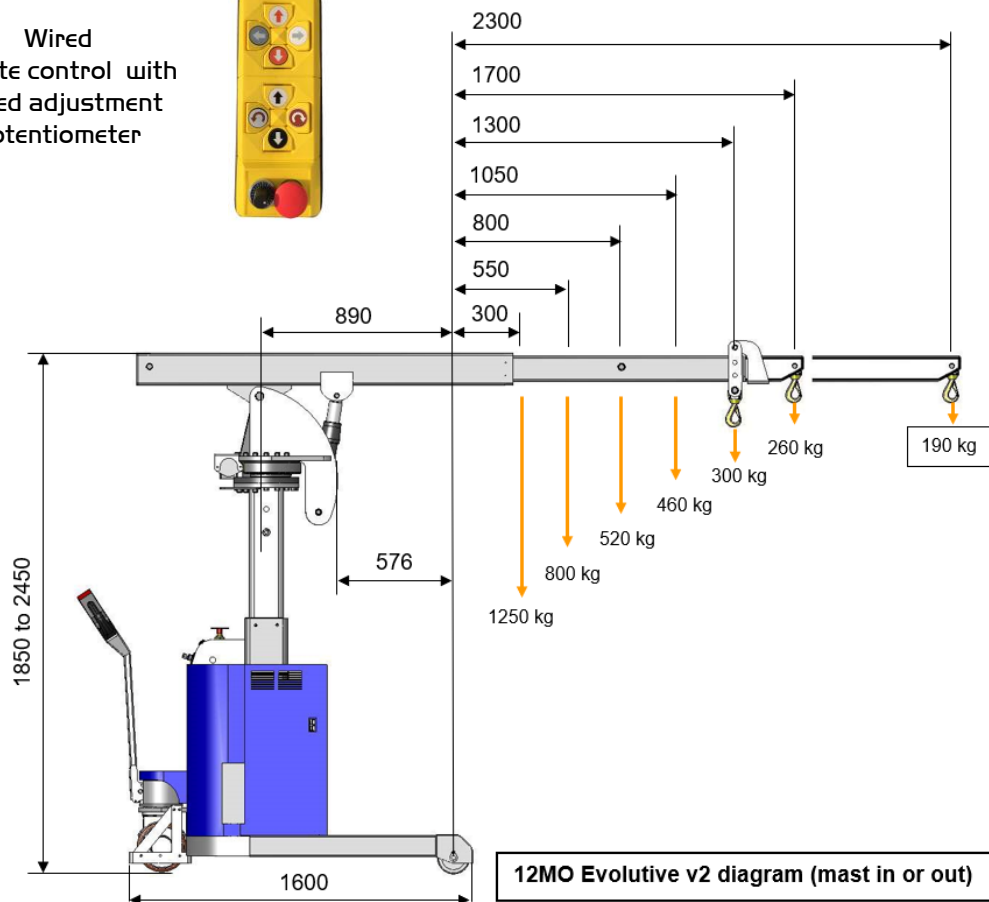
Self-propelled mini-crane with accompanying operator



Dashboard



Wired remote control with speed adjustment potentiometer



I2MO Evolutive v2 diagram (mast in or out)